

Butterfly or

— Most active during the day

— Most active at night

— Is an insect

— Wide, furry body

— Thin hairless body

— Has 8 legs

— Makes a cocoon

— Antennae are thick and feathery

— Has compound eyes

— Has proboscis

— Makes a chrysalis

— Has 3-part body

— Antennae have a knob on the end

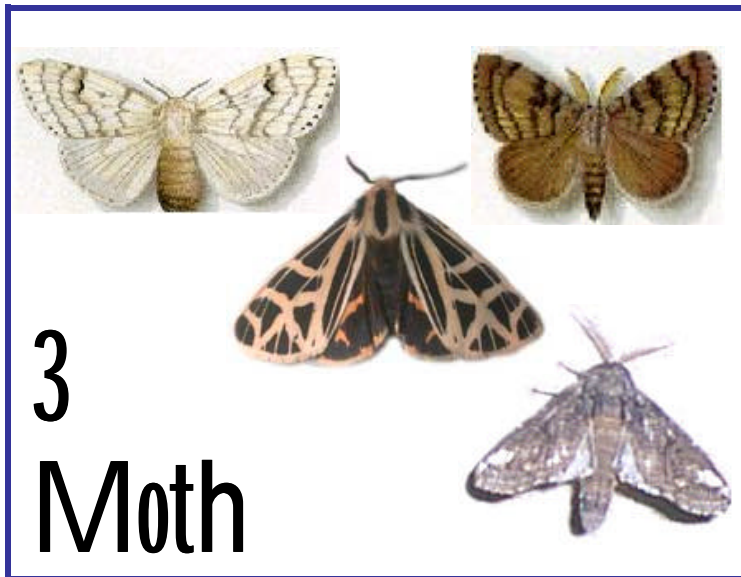
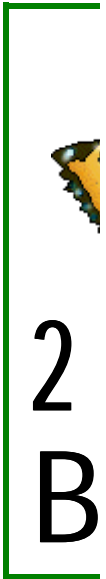
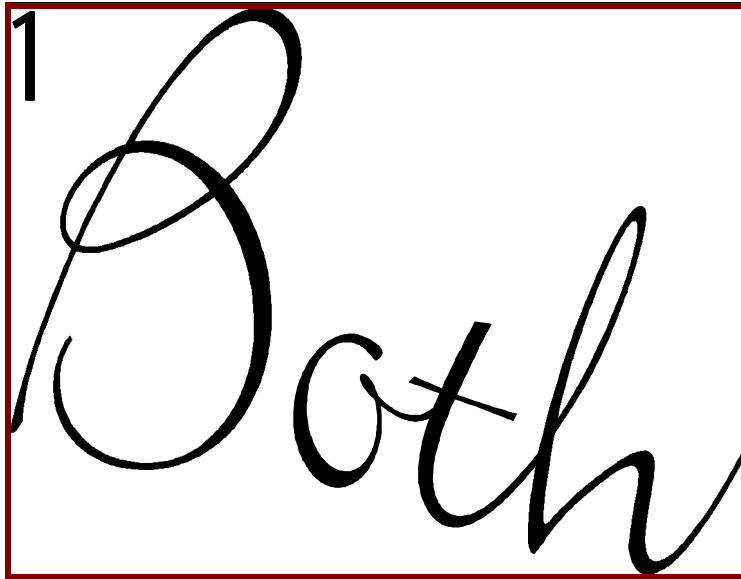
Instructions:

If the description fits both butterflies and moths choose 1;

If the description only fits moths choose 3;

If the

If the



or Moth

CODE
9154

Total Points 78

If the description only fits butterflies choose 2;
If the description doesn't fit butterflies OR moths choose 4

Has 2 pair of wings

Has 4-part body

Has 1 pair of wings

Wings are usually
colorful

Hatches from an egg

Does not go through
metamorphosis

Has simple eyes

Undergoes complete
metamorphosis

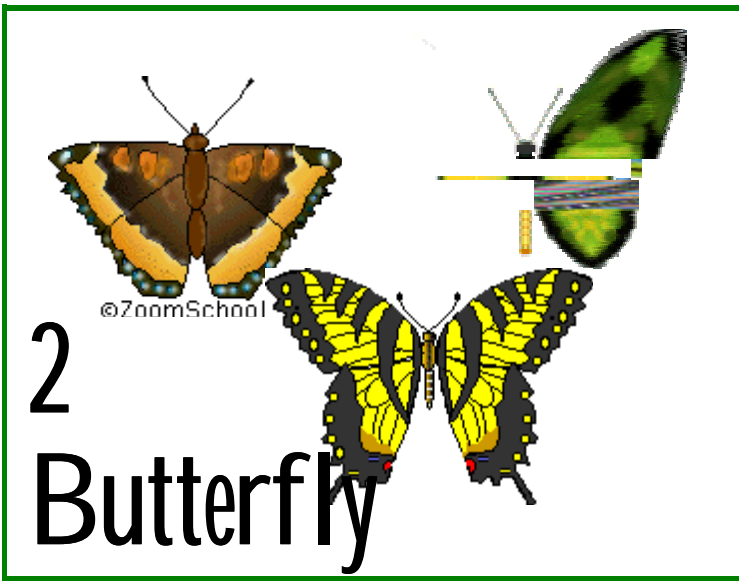
Wings are usually dull

Wings upright when at
rest

Wings horizontal when at
rest

Has six legs

Has two antennae



4
Neither
